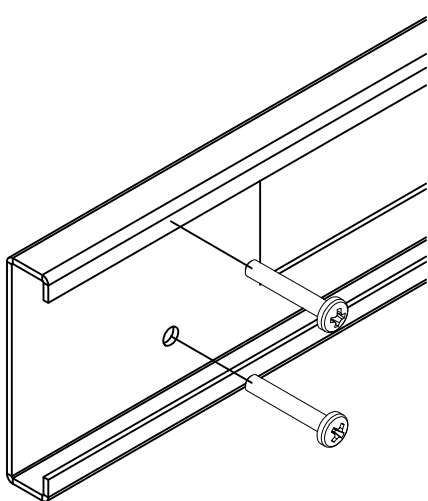


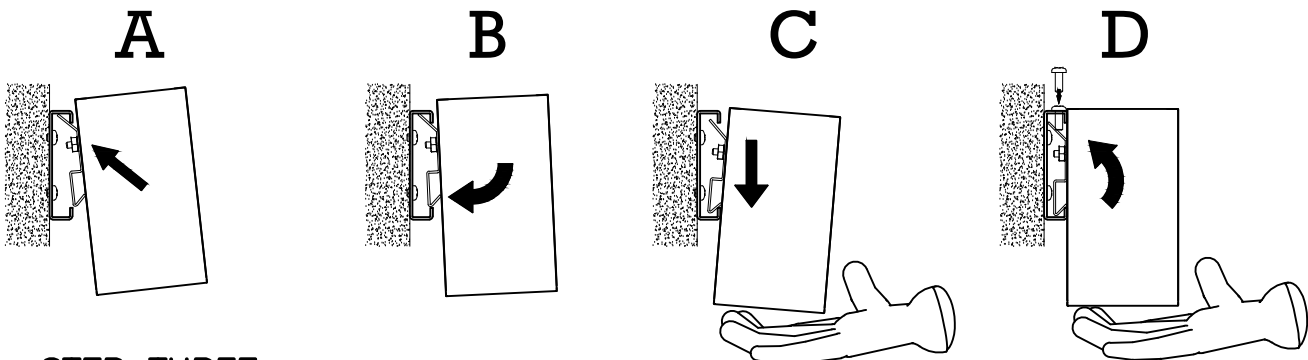
**STEP ONE:**

REMOVE INNER FIXTURE LIGHT BODY COMPLETELY BY DETACHING SAFETY CABLES AND WIRING CONNECTIONS FROM LINEAR BOARDS



**STEP TWO:**

SECURE MOUNTING RAILS FOR FIXTURES PER PATTERN/ROW LAYOUT (HARDWARE BY OTHERS)  
PLEASE NOTE: LEAVE APPROX. 1 1/4" SPACE FROM EDGE OF WALL TO MOUNTING RAIL FOR BOR FIXTURE  
PLEASE NOTE: CONTRACTOR TO PROVIDE BLOCKING BEHIND WALL TO ADEQUATELY SUPPORT FIXTURE WEIGHT

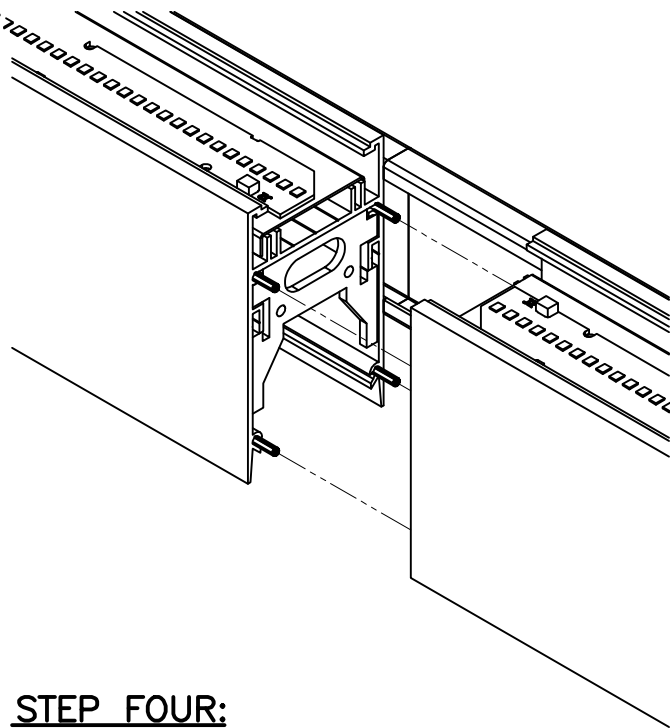


**STEP THREE:**

- A. SLIDE TOP FLANGE OF MOUNTING BRACKET UNDERNEATH TOP FLANGE OF MOUNTING RAIL
- B. ROTATE FIXTURE TOWARD WALL UNTIL BOTTOM FLANGE OF THE MOUNTING BRACKET PASSES BOTTOM FLANGE OF MOUNTING RAIL
- C. WHILE SUPPORTING FIXTURE, REST BOTTOM FLANGE OF THE MOUNTING BRACKET ON BOTTOM FLANGE OF MOUNTING RAIL
- D. ROTATE FIXTURE UP TOWARDS WALL AND SECURE AT MOUNTING POINTS WITH #8 SCREW PROVIDED

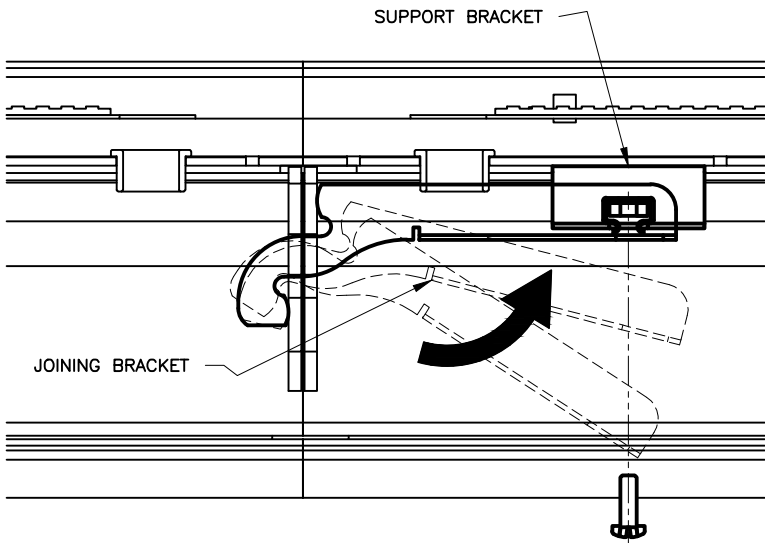
**NOTES:**

FIXTURE TO BE INSTALLED IN ACCORDANCE WITH ALL APPLICABLE CODES BY A QUALIFIED ELECTRICIAN OR OTHER PERSON FAMILIAR WITH THE CONSTRUCTION AND OPERATION OF THIS PRODUCT AND THE HAZARDS INVOLVED.



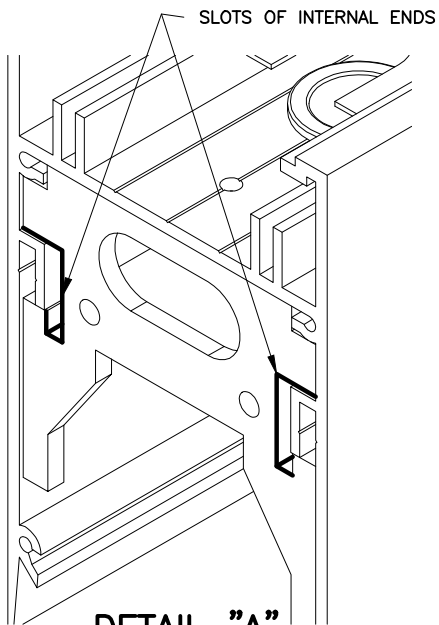
**STEP FOUR:**

- 1. REPEAT STEPS 1, 2, & 3 FROM MOUNTING FIXTURE DETAIL
- 2. SLIDE UNSECURED FIXTURE TOWARD SECURED FIXTURE MAKING SURE ALIGNER PINS INSERT INTO EXTRUSION GROOVE
- 3. SECURE MOUNTING BRACKETS AT MOUNTING POINTS WITH #8 SCREW PROVIDED, DO NOT FULLY TIGHTEN

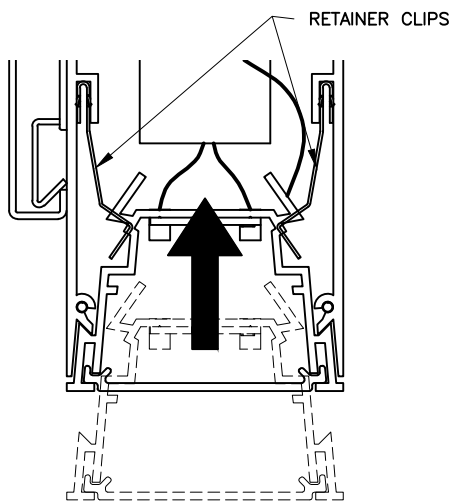


**STEP FIVE:**

INSERT JOINING BRACKET THROUGH SLOTS AT ENDS OF FIXTURE. REFER TO DETAIL "A" PUSH JOINING BRACKET TOWARDS SUPPORT BRACKET AND ALIGN SLOT IN JOINING BRACKET WITH CAGE NUT. SECURE WITH #8 SCREW PROVIDED. FULLY TIGHTEN #8 SCREW AT BOTH THE JOINING BRACKET AND THEN THE WALL MOUNT BRACKETS



**DETAIL "A"**



**STEP SIX:**

ONCE ALL ELECTRICAL CONNECTIONS ARE MADE BY LICENSED ELECTRICAL CONTRACTOR REINSTALL INNER FIXTURE LIGHT BODY. REATTACH SAFETY CABLES (2 PER) AND WIRE HARNESS TO LINEAR BOARDS. GENTLY PUSH LIGHT BODY, WITH LENS INSERTED, INTO UPPER HOUSING UNTIL ENGAGED WITH RETAINING CLIPS.

**PROJECT:**

Material:	<b>MARK</b> <small>An Acuity Brands Company</small>	<b>Mark Architectural Lighting</b> 3 Kilmer Rd. Edison, NJ 08817 T (732)985-2600 F (732) 985-8441 marklighting.com	Description: <b>INSTALLATION WALL MOUNT</b> S2L/S4L PSW SERIES (BIDIRECT SHOWN)	
Gauge:			Finish:	Qty:
Tape:			By: CAC	Date: 08/20/13
C/S:			Scale: NTS	Size: B
Qty./Sht.:			Dwg. no.: 13-2493	Rev.

## IMPORTANT SAFETY INSTRUCTIONS

**READ AND FOLLOW ALL SAFETY INSTRUCTIONS!**  
**SAVE THESE INSTRUCTIONS AND DELIVER TO OWNER AFTER INSTALLATION**

- To reduce the risk of death, personal injury or property damage from fire, electric shock, falling parts, cuts/abrasions, and other hazards please read all warnings and instructions included with and on the fixture box and all fixture labels.
- Before installing, servicing, or performing routine maintenance upon this equipment, follow these general precautions.
- Installation and service of luminaires should be performed by a **qualified licensed electrician**.
- Maintenance of the luminaires should be performed by person(s) familiar with the luminaires' construction and operation and any hazards involved. Regular fixture maintenance programs are recommended.
- It will occasionally be necessary to clean the outside of the refractor/lens. Frequency of cleaning will depend on ambient dirt level and minimum light output which is acceptable to user. Refractor/lens should be washed in a solution of warm water and any mild, non-abrasive household detergent, rinsed with clean water and wiped dry. Should optical assembly become dirty on the inside, wipe refractor/lens and clean in above manner, replacing damaged gaskets as necessary.
- **DO NOT INSTALL DAMAGED PRODUCT!** This luminaire has been properly packed so that no parts should have been damaged during transit. Inspect to confirm. Any part damaged or broken during or after assembly should be replaced.
- If the lamp is marked (Hg) it contains Mercury. Follow all disposal laws. See [www.lamprecycle.org](http://www.lamprecycle.org).
- These instructions do not purport to cover all details or variations in equipment nor to provide every possible contingency to meet in connection with installation, operation, or maintenance. Should further information be desired or should particular problems arise which are not covered sufficiently for the purchaser's or owner's purposes, this matter should be referred to Acuity Brands Lighting, Inc.



### WARNING RISK OF ELECTRIC SHOCK

- ✓ Disconnect or turn off power before installation or servicing.
- ✓ Verify that supply voltage is correct by comparing it with the luminaire label information.
- ✓ Make all electrical and grounded connections in accordance with the National Electrical Code (NEC) and any applicable local code requirements.
- ✓ All wiring connections should be capped with UL approved recognized wire connectors.



### WARNING RISK OF BURN

- ✓ Allow lamp/fixture to cool before handling. Do not touch hot lens, lamp, guard, or enclosure.
- ✓ Do not exceed maximum wattage marked on luminaire label.
- ✓ Follow all lamp manufacturer's warnings, recommendations and restrictions on lamp operation including but not limited to: ballast type, burning position, replacement, and recycling.
- ✓ Use only lamps that comply with ANSI standards.



### CAUTION RISK OF INJURY

- ✓ Wear gloves and safety glasses at all times when removing luminaire from carton, installing, servicing or performing maintenance.
- ✓ Avoid direct eye exposure to the light source while it is on.



### CAUTION RISK OF FIRE

- ✓ Keep combustible and other materials that can burn away from lamp/lens.
- ✓ Do not operate in close proximity to persons, combustible materials or substances affected by heat or drying.

**Please see product specific installation instructions for additional warnings or any applicable FCC or other regulatory statements.**

**Failure to follow any of these instructions could void product warranties.**

**For a complete listing of product Terms and Conditions, please visit [www.acuitybrands.com](http://www.acuitybrands.com).**

#### Our Brands

Indoor/Outdoor  
Lithonia Lighting  
Carandini  
Holophane  
RELOC  
Light Concepts

Indoor Lighting  
Gotham  
Mark Architectural Lighting  
Peerless  
Renaissance Lighting  
Winona Lighting

Outdoor Lighting  
American Electric Lighting  
Antique Street Lamps  
Hydrel  
Tersen

Controls  
DARK TO LIGHT  
LC&D  
ROAM  
Sensor Switch  
Synergy

Daylighting  
SunOptics

Acuity Brands Lighting, Inc. assumes no responsibility for claims arising out of improper or careless installation or handling of its products.

© 2010 Acuity Brands Lighting, Inc. All rights reserved. 12/01/10 ABL General Warnings, Form No. 503.204



## CONTROLS IMPORTANT SAFETY INSTRUCTIONS

**READ AND FOLLOW ALL SAFETY INSTRUCTIONS!**  
**SAVE THESE INSTRUCTIONS AND DELIVER TO OWNER AFTER INSTALLATION**

- To reduce the risk of death, personal injury or property damage from fire, electric shock, falling parts, cuts/abrasions, and other hazards please read all warnings and instructions included with and on the fixture box and all fixture labels.
- Before installing, servicing, or performing routine maintenance upon this equipment, follow these general precautions.
- Installation and service should be performed by a **qualified licensed electrician**.
- Maintenance should be performed by qualified person(s) familiar with the products' construction and operation and any hazards involved. Regular maintenance programs are recommended.
- **DO NOT INSTALL DAMAGED PRODUCT!** This product has been properly packed so that no parts should have been damaged during transit. Inspect to confirm. Any part damaged or broken during or after assembly should be replaced.
- These instructions do not purport to cover all details or variations in equipment nor to provide every possible contingency to meet in connection with installation, operation, or maintenance. Should further information be desired or should particular problems arise which are not covered sufficiently for the purchaser's or owner's purposes, this matter should be referred to Acuity Brands Lighting, Inc.



### WARNING RISK OF ELECTRIC SHOCK

- ✓ Disconnect or turn off power before installation or servicing.
- ✓ Verify that supply voltage is correct by comparing it with the product information.
- ✓ Make all electrical and grounded connections in accordance with the National Electrical Code (NEC) and any applicable local code requirements.
- ✓ All wiring connections should be capped with UL approved recognized wire connectors.
- ✓ All unused connector openings must be capped.



### WARNING RISK OF BURN or FIRE

- ✓ Do not exceed maximum wattage, ratings, or published operating conditions of product.
- ✓ Do not overload.
- ✓ Follow all manufacturer's warnings, recommendations and restrictions to ensure proper operation of product.



### CAUTION RISK OF INJURY

- ✓ Wear gloves and safety glasses at all times when installing, servicing or performing maintenance.

**Always read the fixtures complete installation instructions prior to installation for any additional fixture specific warnings.**

**Failure to follow any of these instructions could void product warranties. For a complete listing of product Terms and Conditions, please visit [www.acuitybrands.com](http://www.acuitybrands.com).**

#### Our Brands

Indoor/Outdoor  
Lithonia Lighting  
Carandini  
Holophane  
RELOC  
Light Concepts

Indoor Lighting  
Gotham  
Mark Architectural Lighting  
Peerless  
Renaissance Lighting  
Winona Lighting

Outdoor Lighting  
American Electric Lighting  
Antique Street Lamps  
Hydrel  
Tersen

Controls  
DARK TO LIGHT  
LC&D  
ROAM  
Sensor Switch  
Synergy

Daylighting  
SunOptics

**Acuity Brands Lighting, Inc. assumes no responsibility for claims arising out of improper or careless installation or handling of its products.**

ABL LED General Warnings, Form No. 503.203

© 2010 Acuity Brands Lighting, Inc. All rights reserved. 12/01/10



### CAUTION: RISK OF PRODUCT DAMAGE

- ✓ Electrostatic Discharge (ESD): ESD can damage product(s). Personal grounding equipment must be worn during all installation or servicing of the unit.
- ✓ Do not touch individual electrical components as this can cause ESD and affect product performance.
- ✓ Do not stretch or use cable sets that are too short or are of insufficient length.
- ✓ Do not tamper with contacts.
- ✓ Do not modify the product.
- ✓ Do not change or alter internal wiring or installation circuitry.
- ✓ Do not use product for anything other than its intended use.
- ✓ If installing latching springs: ensure that the springs are fully engaged prior to moving to next connection.
- ✓ If installing wiring systems: Materials and component parts of a manufacturing wiring system as described in Article 604 of the National Electric Code and Underwriters Laboratories Standard for Safety #183 **MUST BE** installed.

Please see product specific installation instructions for additional warnings or any applicable FCC or other regulatory statements.

**Failure to follow any of these instructions could void product warranties. For a complete listing of product Terms and Conditions, please visit [www.acuitybrands.com](http://www.acuitybrands.com).**

Our Brands	Indoor/Outdoor Lithonia Lighting Carandini Holephane RELOC Ligh: Concepts	Indoor Lighting Gotham Mark Architectural Lighting Peerless Renaissance Lighting Winona Lighting	Outdoor Lighting American Electric Lighting Antique Street Lamps Hydrel Tersen	Controls DARK TO LIGHT LC&D ROAM Sensor Switch SynergySwitch	Daylighting SunOptics
------------	--	---	--	---	--------------------------

Acuity Brands Lighting, Inc. assumes no responsibility for claims arising out of improper or careless installation or handling of its products.

ABL LED General Warnings, Form No. 503.203

© 2010 Acuity Brands Lighting, Inc. All rights reserved. 12/01/10



**READ AND FOLLOW ALL SAFETY INSTRUCTIONS!**  
**SAVE THESE INSTRUCTIONS AND DELIVER TO OWNER AFTER INSTALLATION**

- To reduce the risk of death, personal injury or property damage from fire, electric shock, falling parts, cuts/abrasions, and other hazards please read all warnings and instructions included with and on the fixture box and all fixture labels.
- Before installing, servicing, or performing routine maintenance upon this equipment, follow these general precautions.
- Installation and service of luminaires should be performed by a **qualified licensed electrician**.
- Maintenance of the luminaires should be performed by person(s) familiar with the luminaires' construction and operation and any hazards involved. Regular fixture maintenance programs are recommended.
- It will occasionally be necessary to clean the outside of the refractor/lens. Frequency of cleaning will depend on ambient dirt level and minimum light output which is acceptable to user. Refractor/lens should be washed in a solution of warm water and any mild, non-abrasive household detergent, rinsed with clean water and wiped dry. Should optical assembly become dirty on the inside, wipe refractor/lens and clean in above manner, replacing damaged gaskets as necessary.
- **DO NOT INSTALL DAMAGED PRODUCT!** This luminaire has been properly packed so that no parts should have been damaged during transit. Inspect to confirm. Any part damaged or broken during or after assembly should be replaced.
- Recycle: For information on how to recycle LED electronic products, please visit [www.epa.gov](http://www.epa.gov).
- These instructions do not purport to cover all details or variations in equipment nor to provide every possible contingency to meet in connection with installation, operation, or maintenance. Should further information be desired or should particular problems arise which are not covered sufficiently for the purchaser's or owner's purposes, this matter should be referred to Acuity Brands Lighting, Inc.



**WARNING**  
**RISK OF ELECTRIC SHOCK**

- ✓ Disconnect or turn off power before installation or servicing.
- ✓ Verify that supply voltage is correct by comparing it with the luminaire label information.
- ✓ Make all electrical and grounded connections in accordance with the National Electrical Code (NEC) and any applicable local code requirements.
- ✓ All wiring connections should be capped with UL approved recognized wire connectors.



**WARNING**  
**RISK OF BURN**

- ✓ Allow lamp/fixture to cool before handling. Do not touch enclosure or light source.
- ✓ Do not exceed maximum wattage marked on luminaire label.
- ✓ Follow all manufacturer's warnings, recommendations and restrictions for: driver type, burning position, mounting locations/methods, replacement and recycling.



**CAUTION**  
**RISK OF INJURY**

- ✓ Wear gloves and safety glasses at all times when removing luminaire from carton, installing, servicing or performing maintenance.
- ✓ Avoid direct eye exposure to the light source while it is on.



**CAUTION**  
**RISK OF FIRE**

- ✓ Keep combustible and other materials that can burn, away from lamp/lens.
- ✓ Do not operate in close proximity to persons, combustible materials or substances affected by heat or drying.

**CAUTION: RISK OF PRODUCT DAMAGE**

- ✓ Never connect components under load.
- ✓ Do not mount or support these fixtures in a manner that can cut the outer jacket or damage wire insulation.
- ✓ Unless individual product specifications deem otherwise: Never connect an LED product directly to a dimmer packs, occupancy sensors, timing devices, or other related control devices. LED fixtures must be powered directly off a switched circuit.
- ✓ Unless individual product specifications deem otherwise: Do not restrict fixture ventilation. Allow for some volume of airspace around fixture. Avoid covering LED fixtures with insulation, foam, or other material that will prevent convection or conduction cooling.
- ✓ Unless individual product specifications deem otherwise: Do not exceed fixtures maximum ambient temperature.
- ✓ Only use fixture in its intended location.
- ✓ LED products are Polarity Sensitive. Ensure proper Polarity before installation.
- ✓ Electrostatic Discharge (ESD): ESD can damage LED fixtures. Personal grounding equipment must be worn during all installation or servicing of the unit.
- ✓ Do not touch individual electrical components as this can cause ESD, shorten lamp life, or alter performance.
- ✓ Some components inside the fixture may not be serviceable. In the unlikely event your unit may require service, stop using the unit immediately and contact an ABL representative for assistance.
- ✓ Always read the fixtures complete installation instructions prior to installation for any additional fixture specific warnings.

**Please see product specific installation instructions for additional warnings or any applicable FCC or other regulatory statements.**

**Failure to follow any of these instructions could void product warranties. For a complete listing of product Terms and Conditions, please visit [www.acuitybrands.com](http://www.acuitybrands.com).**

Our Brands	Indoor/Outdoor	Indoor Lighting	Outdoor Lighting	Controls	Daylighting
	Lithonia Lighting	Gotham	American Electric Lighting	DARK TO LIGHT	SunOptics
	Carandini	Mark Architectural Lighting	Antique Street Lamps	LC&D	
	Holophane	Peerless	Hydrel	ROAM	
	RELOC	Renaissance Lighting	Tersen	Sensor Switch	
	Light Concepts	Winona Lighting		Synergy	

**Acuity Brands Lighting, Inc. assumes no responsibility for claims arising out of improper or careless installation or handling of its products.**

ABL LED General Warnings, Form No. 503.203

© 2010 Acuity Brands Lighting, Inc. All rights reserved. 12/01/10